

MONTHLY MEMBERSHIP PROGRESS REPORT

LOCATION INDIANA

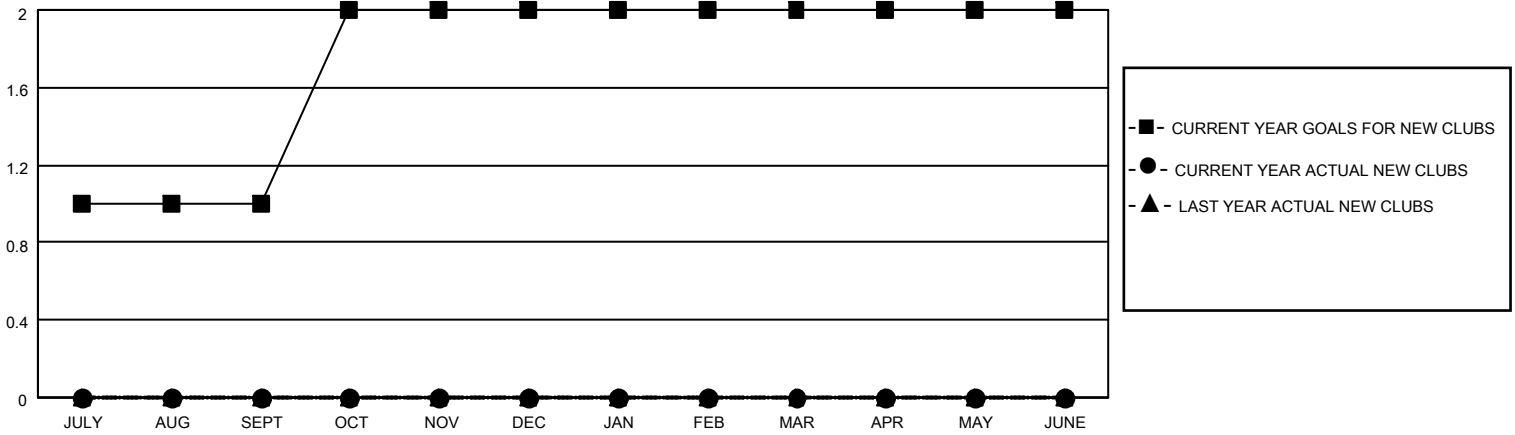
District 25 D

Results as of: 4/30/2023

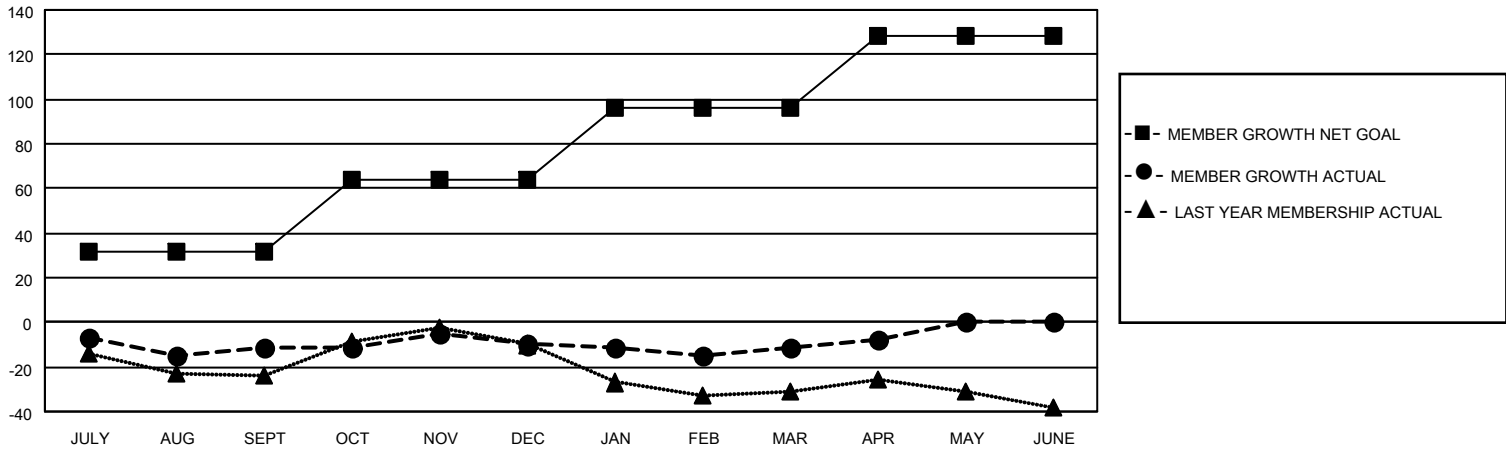
Clubs			
RESULTS FOR 2022-2023			
QUARTER	NEW CLUB GOAL	NEW CLUBS	DROPPED CLUBS
JULY/AUG/SEPT	1	0	1
OCT/NOV/DEC	1	0	1
JAN/FEB/MAR	0	0	0
APR/MAY/JUNE	0	0	0

Members			
RESULTS FOR 2022-2023			
QUARTER	MEMBER GROWTH NET GOAL	MEMBER GROWTH ACTUAL	DROPPED MEMBERS ACTUAL (including transfers)
JULY/AUG/SEPT	32	29	39
OCT/NOV/DEC	32	23	21
JAN/FEB/MAR	32	33	31
APR/MAY/JUNE	32	13	10

GOALS AND ACTUAL NEW CLUBS CUMULATIVE



GOALS AND ACTUAL MEMBERS CUMULATIVE



DROPPED CLUBS: 2	
<u>DROPPED MEMBERS</u>	
DECEASED	26
CLUB CANCELLED	4
OTHER	71
TOTAL	101

21 CLUBS OF 37 ADDED 1 OR MORE NEW MEMBERS

[CLICK HERE FOR CUMULATIVE MEMBERSHIP DATA](#)

<u>GENDER DISTRIBUTION</u>	
MALE	843 (74.21%)
FEMALE	292 (25.70%)
NON BINARY	0 (0.00%)
PREFER NOT TO ANSWER	1 (0.09%)
TOTAL FAMILY UNIT MEMBERS	
	210
FAMILY MEMBERS PAYING HALF DUES	
	106